

049151

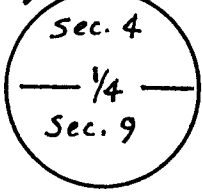
RECEIVED  
LARAMIE COUNTY  
CHEYENNE, WY.

CERTIFIED LAND CORNER RECORDATION

'88 SEP 22 PM 3 32

T14N, R68W

DESCRIPTION OF CORNER EVIDENCE FOUND, AND ORIGINAL RECORD (If known)

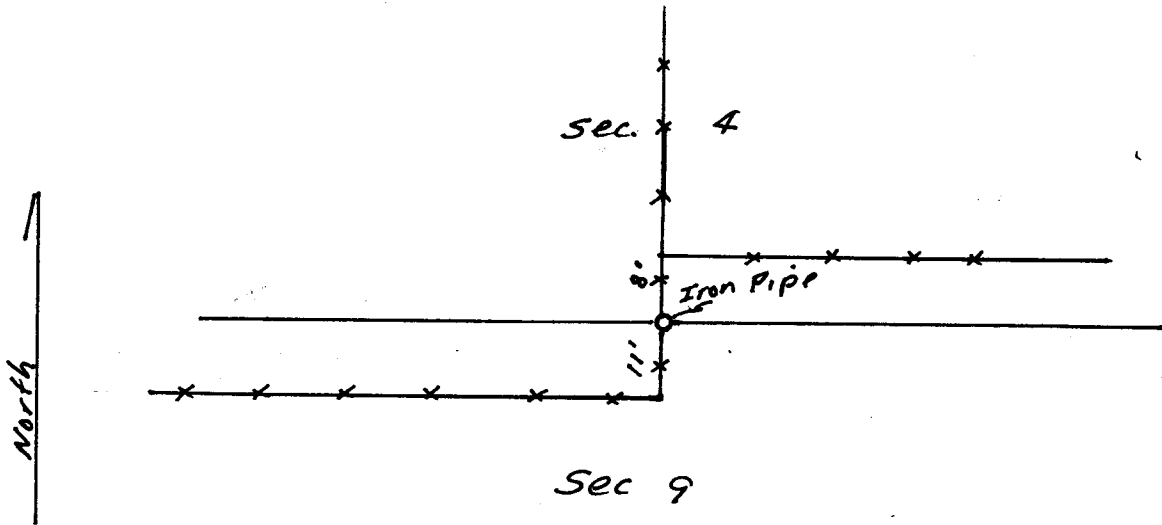


Did not Find G.L.O. Monument which is described as a Granite Boulder 14" x 8" x 8".

DESCRIPTION OF MONUMENT AND ACCESSORIES ESTABLISHED TO PERPETUATE THE ORIGINAL LOCATION OF THIS CORNER:

Set a 2" x 24" Iron Pipe with Alum Cap marked for 1/4 Corner. Used Single Proportional Measure to Relocate.

SKETCH, WITH COURSE AND DISTANCE TO ADJACENT CORNER IF DETERMINED IN THIS SURVEY. (May Sketch or Paste Reproduction on Reverse Side.)



For Corner Ties  
See Reverse Side

Field Survey  
Sept. 1988

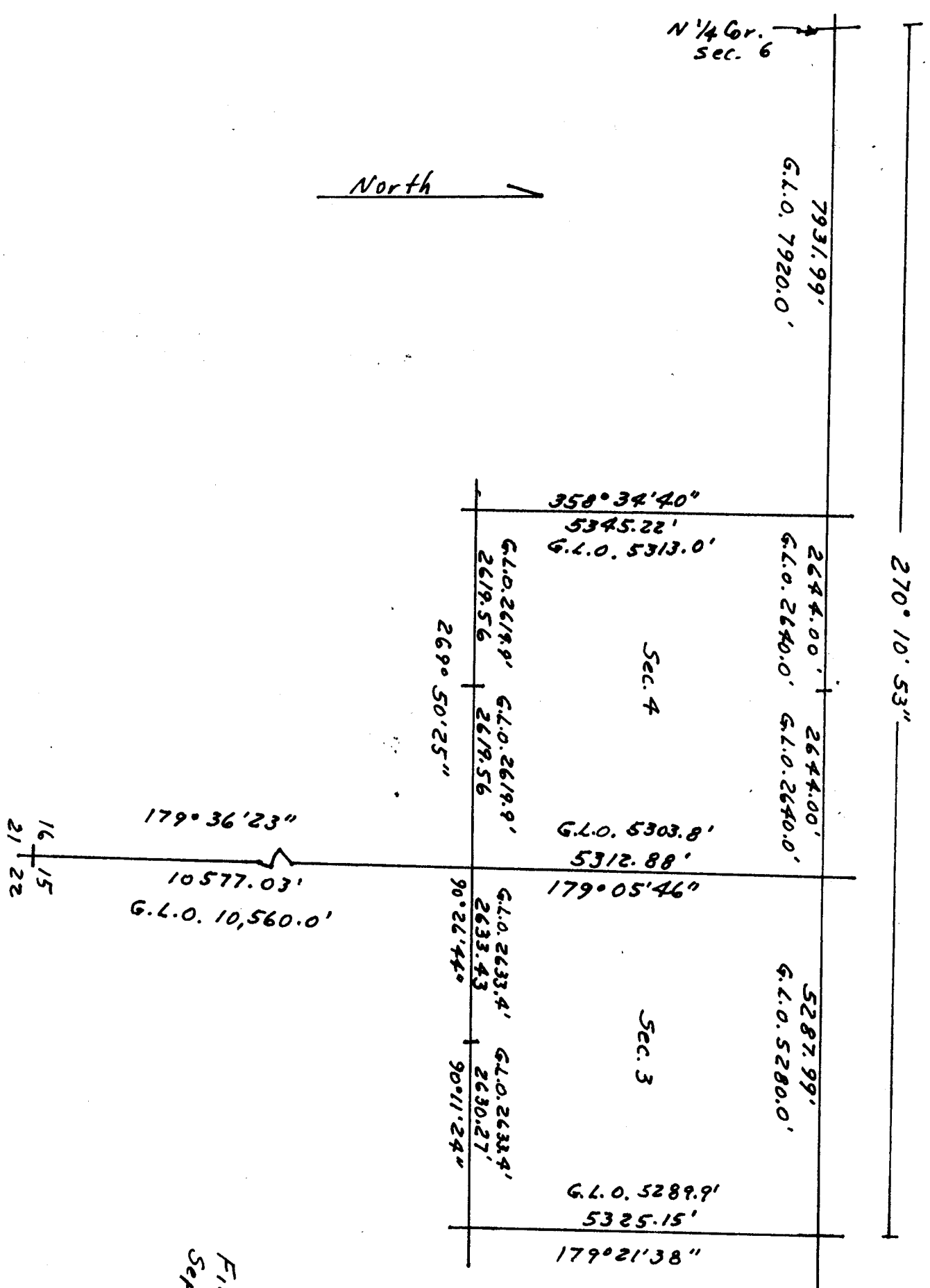
I, Edward C. Fry certify that I have carefully performed or reviewed the work done on the diagrammed corner as reported on this recordation form and approve the same.

Edward C. Fry PE/LS 662  
Signature of Surveyor Registration No.

STATE OF WYOMING,  
Office of Clerk and Recorder,  
County of Laramie

This "corner record" was filed for record on the 22 day of September, 1988, was noted on the cross-index plat and is assigned page No. 614, in book No. 1265.

Janet C. Whitcomb  
County Official  
Cross Index No. \_\_\_\_\_ T. \_\_\_\_\_ R. \_\_\_\_\_ Mer. \_\_\_\_\_  
\_\_\_\_\_ T. \_\_\_\_\_ R. \_\_\_\_\_ Mer. \_\_\_\_\_  
\_\_\_\_\_ T. \_\_\_\_\_ R. \_\_\_\_\_ Mer. \_\_\_\_\_  
\_\_\_\_\_ T. \_\_\_\_\_ R. \_\_\_\_\_ Mer. \_\_\_\_\_  
\_\_\_\_\_ T. \_\_\_\_\_ R. \_\_\_\_\_ Mer. \_\_\_\_\_  
\_\_\_\_\_ T. \_\_\_\_\_ R. \_\_\_\_\_ Mer. \_\_\_\_\_



Field Survey  
Sept. 1988